

UG

Lagerhalle Industrie strasse 6

5102 Reppers wald

72 m

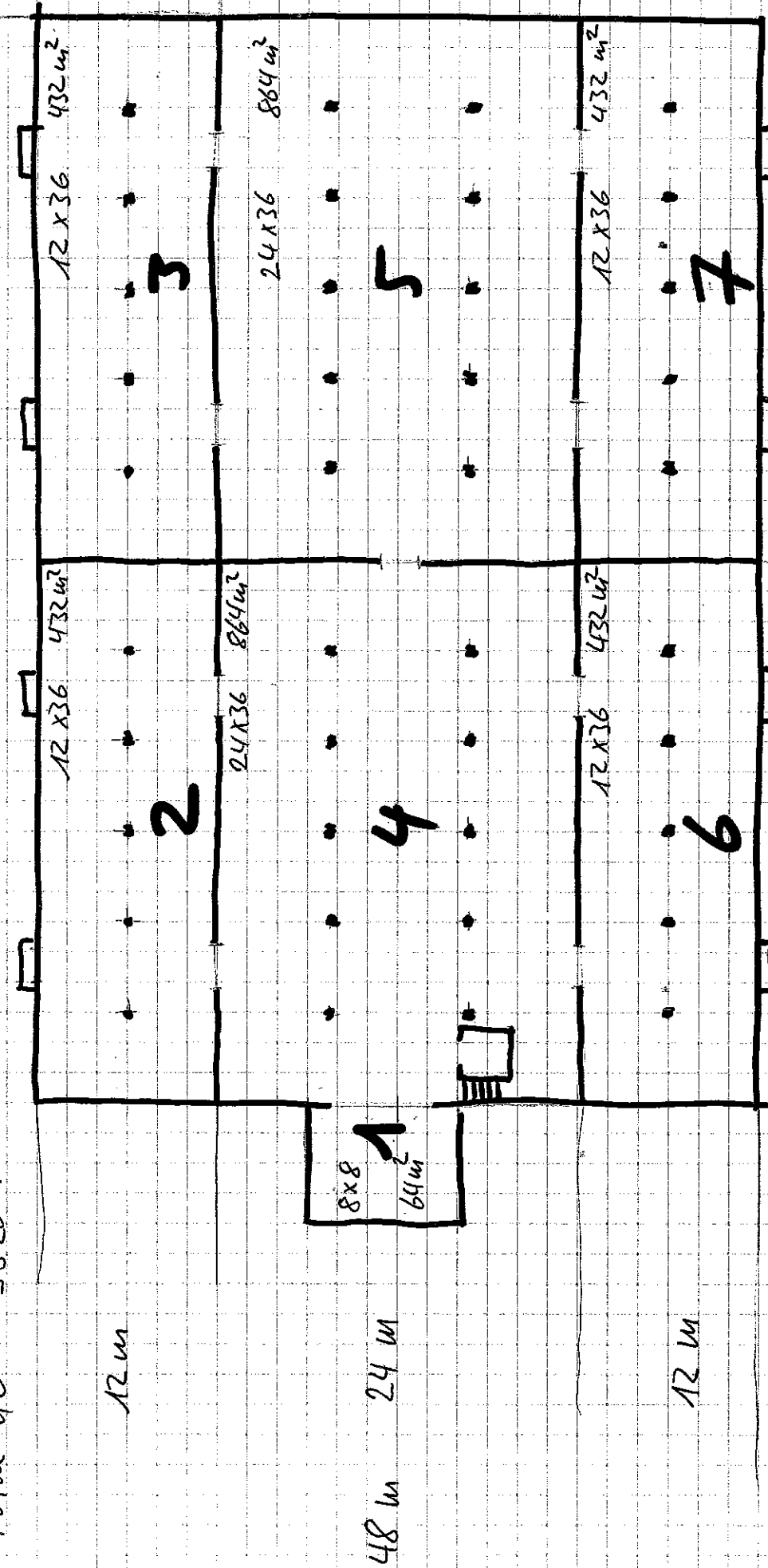
$$48 \times 72 \text{ m} = 3456 \text{ m}^2$$

$$8 \times 8 = 64 \text{ m}^2$$

$$\text{Total UG} = 3520 \text{ m}^2$$

36 m

36 m



12 m

48 m 24 m

12 m

Rok 9.3.95

OG Lagerhalle Industriestrasse 6 5102 Reppenau

$$24 \times 36 = 864 \text{ m}^2$$

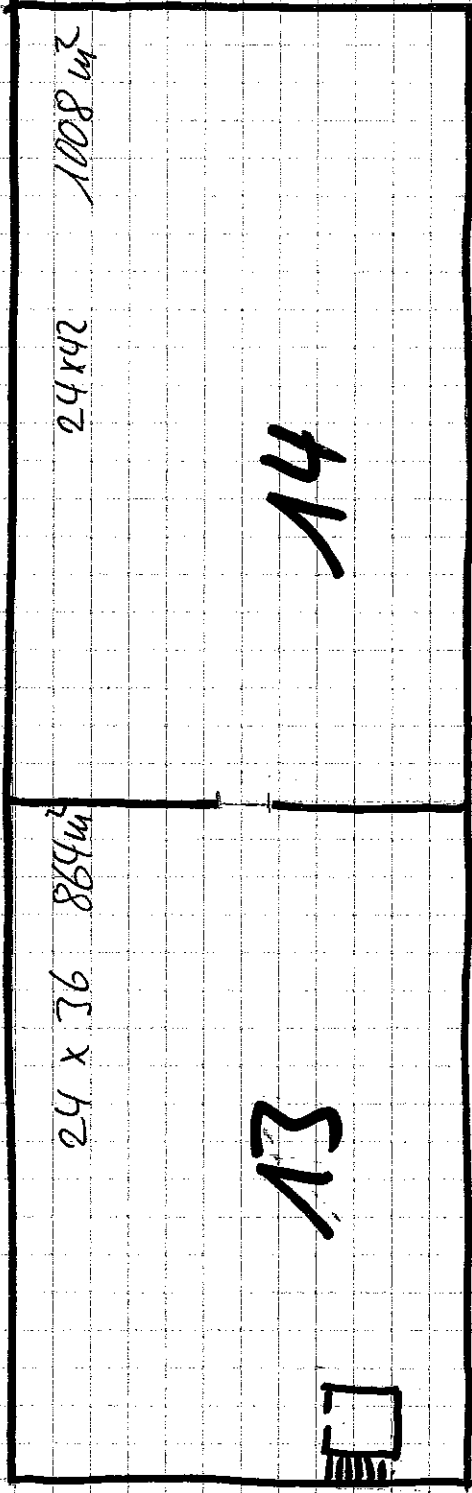
$$24 \times 42 = 1008 \text{ m}^2$$

$$\text{Total OG } 1872 \text{ m}^2$$

FS m

36

42



24

A3

A4

Peak 9.3.95

EG Lagerhalle Industriestrasse 6 5102 Puyssard

78 m

48 x 36 1728 m²

36 x 42 1512 m²

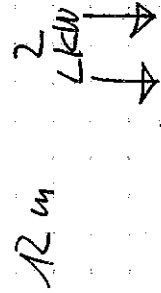
42 m

36 m

Total EG 3240 m²

48 x 36 1728 m²

8



48 m 24 m

9



1008 m²



24 x 42

12 m

10

504 m²

12 x 42

12