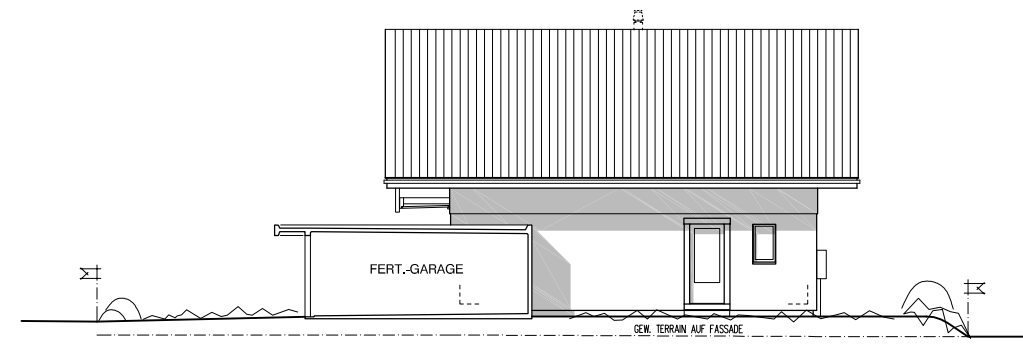
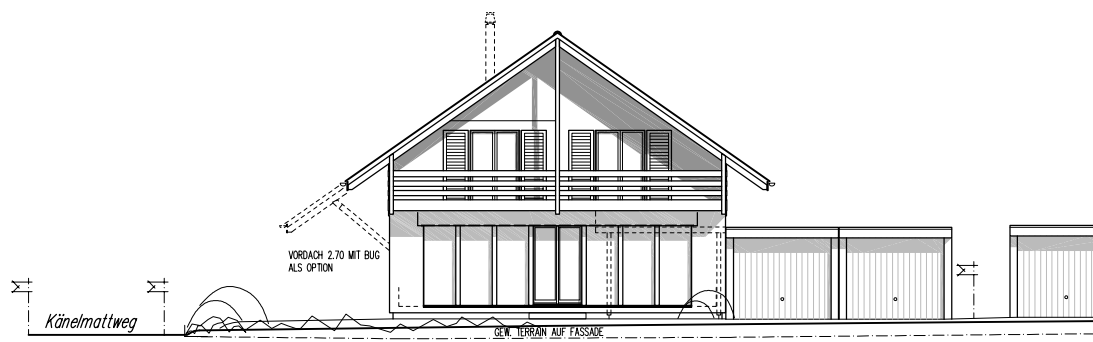


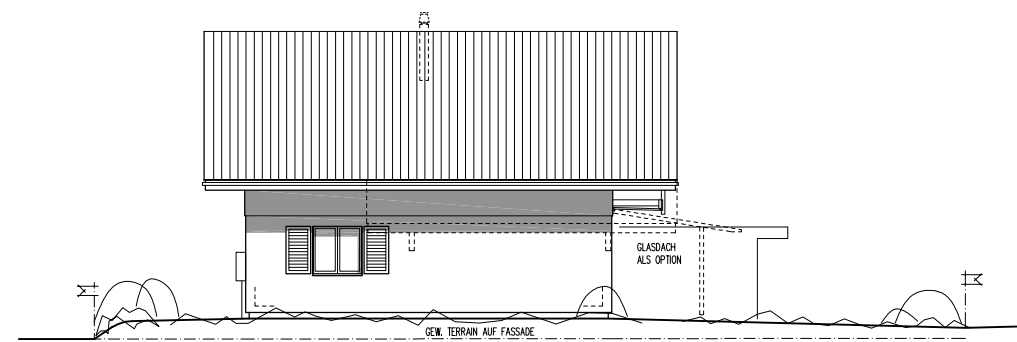
OSTFASSADE



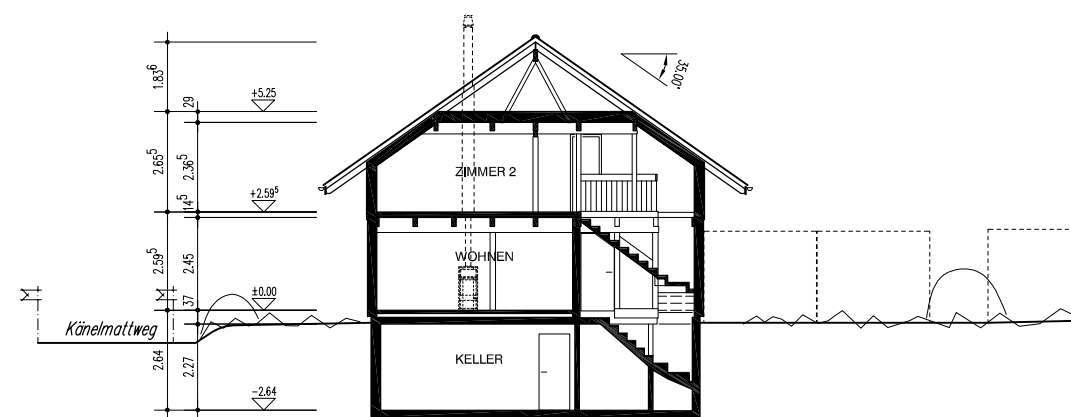
SÜDFASSADE



WESTFASSADE



NORDFASSADE



QUERSCHNITT

TYP KE L WALM

| | | |
|---|---------------|---------------|
| EFH H19 KLEEMATTWEG NIEDERLENZ | | 07.026/H19/03 |
| Gez. | 30. NOV. 2009 | |
| Rev. | | |
| Rev. | | |
| Rev. | | |
| Plan Gr. | A1 | |
| Aktiengesellschaft Kämpf Suhrhardweg 6 Tel. 062 889 16 00 Planung und Holzbau 5102 Rapperswil Fax. 062 889 16 01 | | |

FASSADEN+SCHNITT 1:200