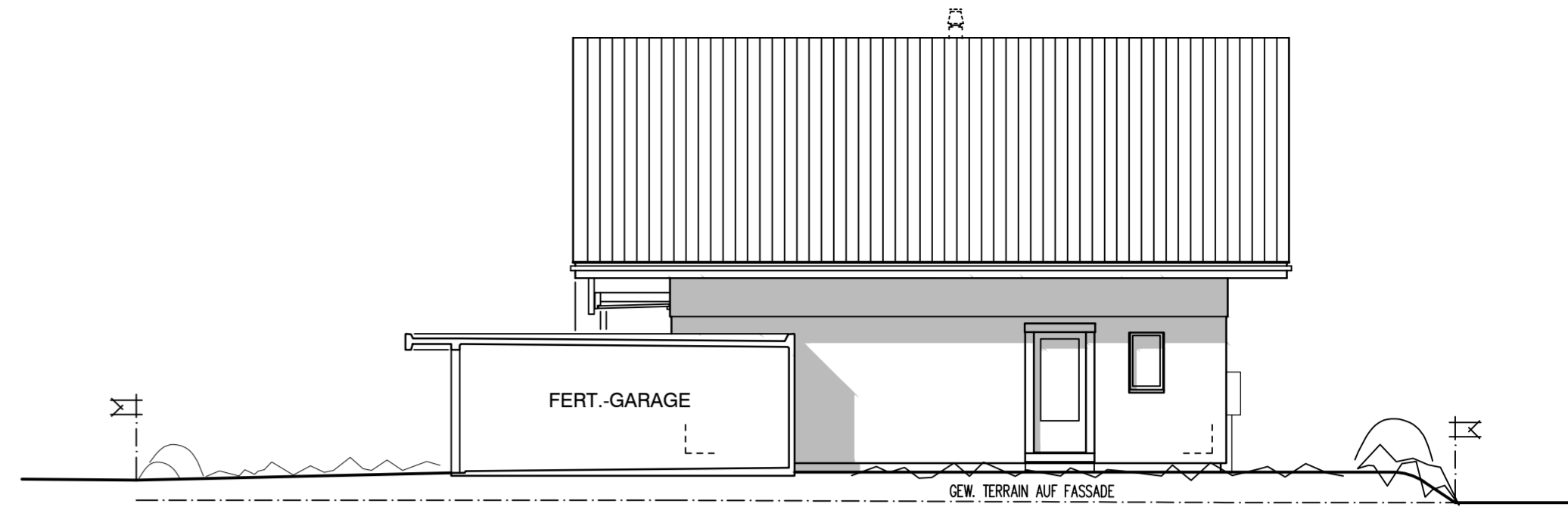
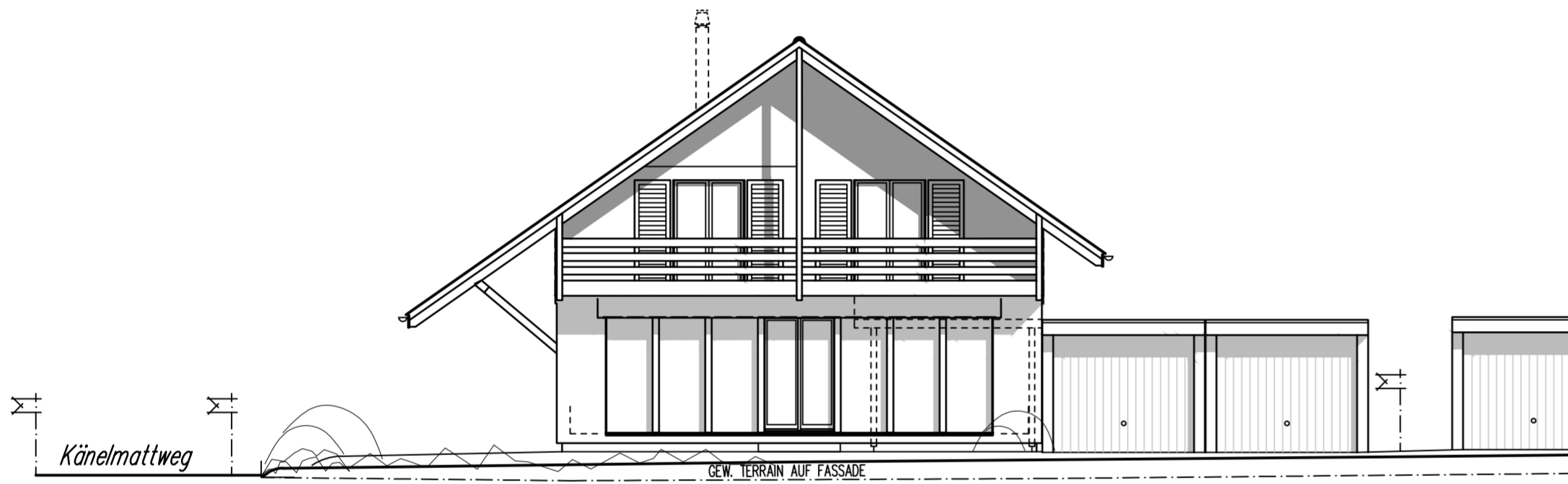


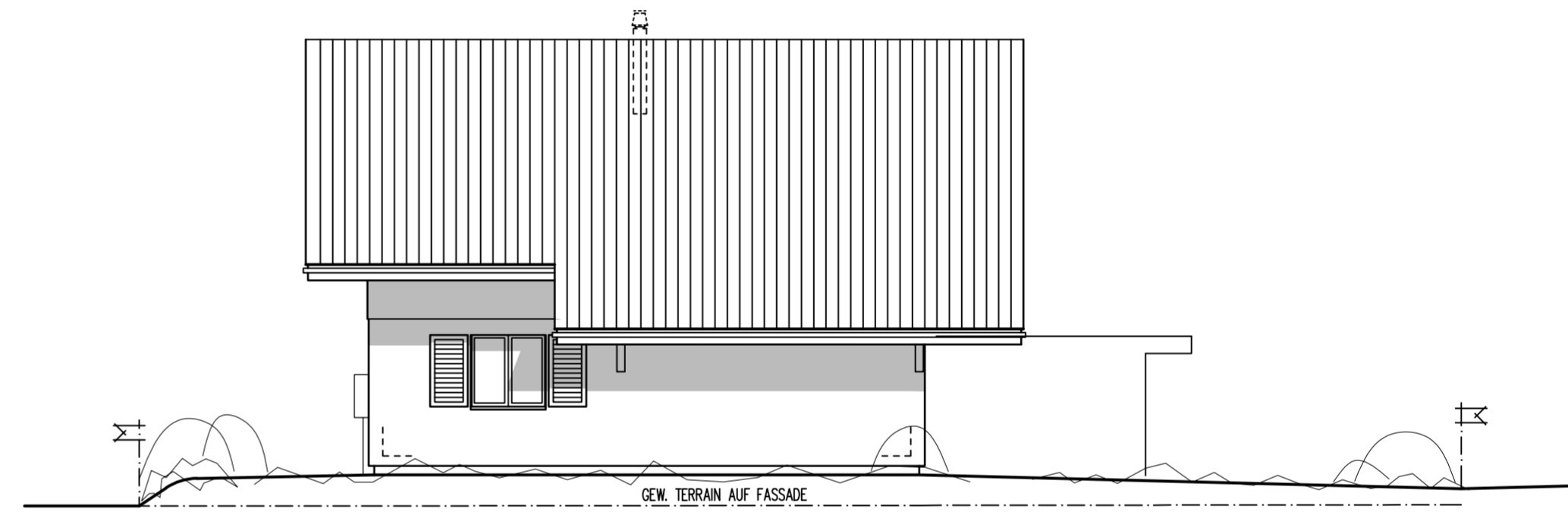
OSTFASSADE



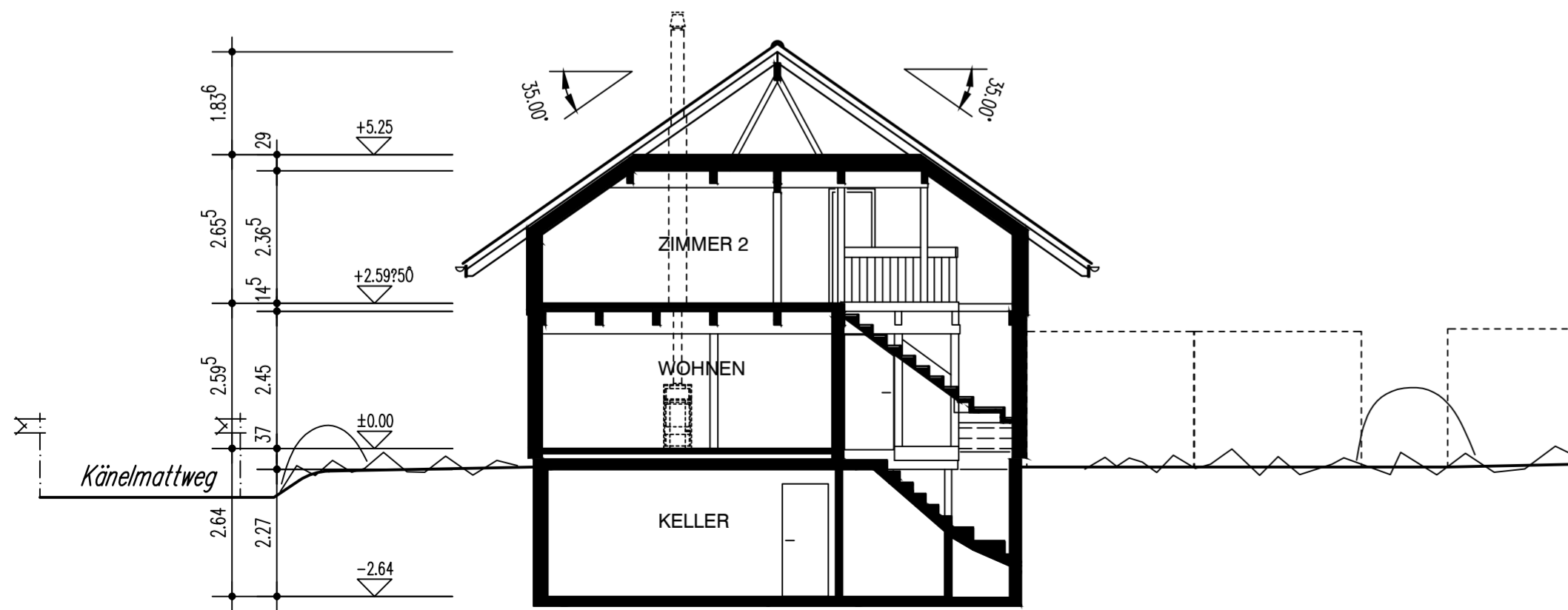
SÜDFASSADE



WESTFASSADE



NORDFASSADE



QUERSCHNITT

TYP KE L WALM

EFH H19 KLEEMATTWEG 17 NIEDERLENZ		07.026/H19/03
Gez.	\$	30. NOV. 2009
Rev.	\$	25. FEB. 2010
Rev.	\$	09. SEP. 2010
Rev.	tok	09. Mai 2019
Rev.		
Plan Gr.		A2
G. Kämpf AG Holzbau miete@kaempf.ch		Suhrhardweg 6 5102 Rapperswil
		Tel. 062 889 16 00 Fax. 062 889 16 01

FASSADEN+SCHNITT 1:100

