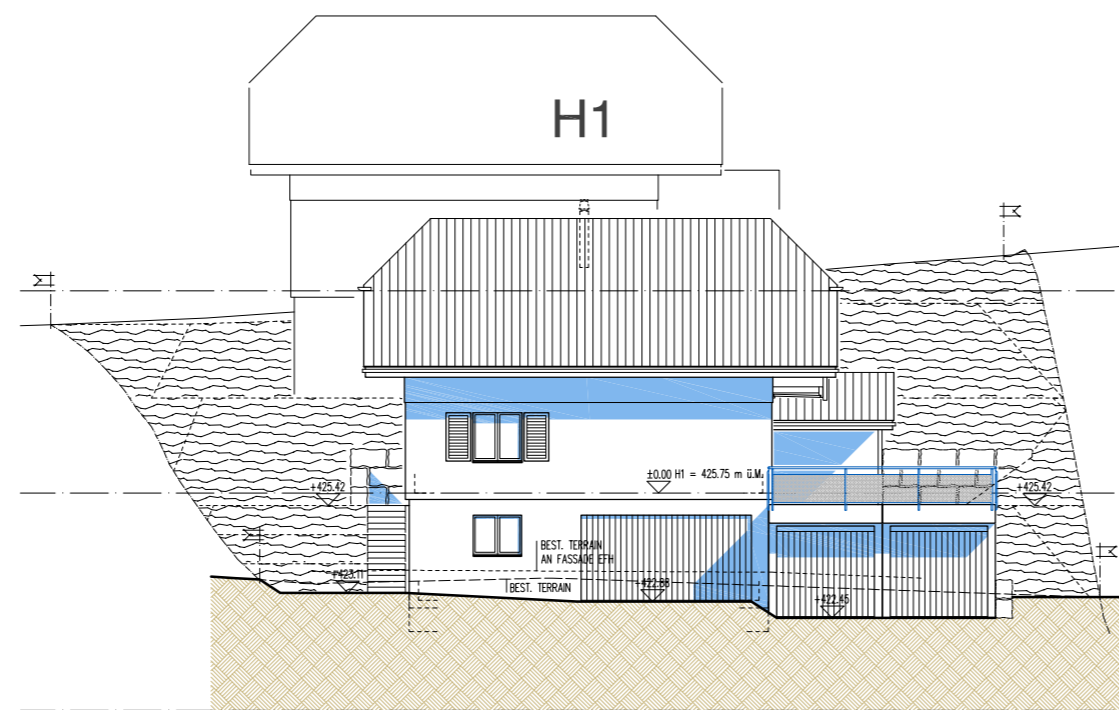
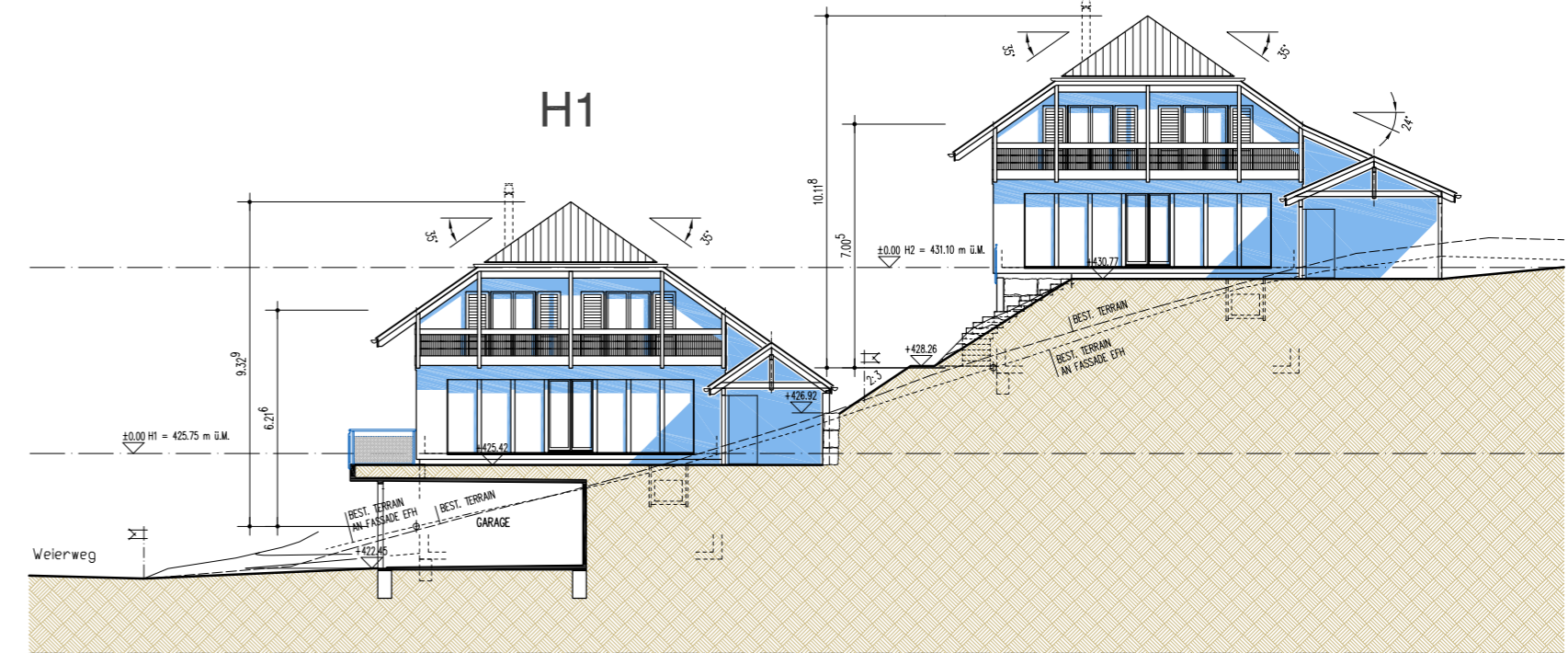


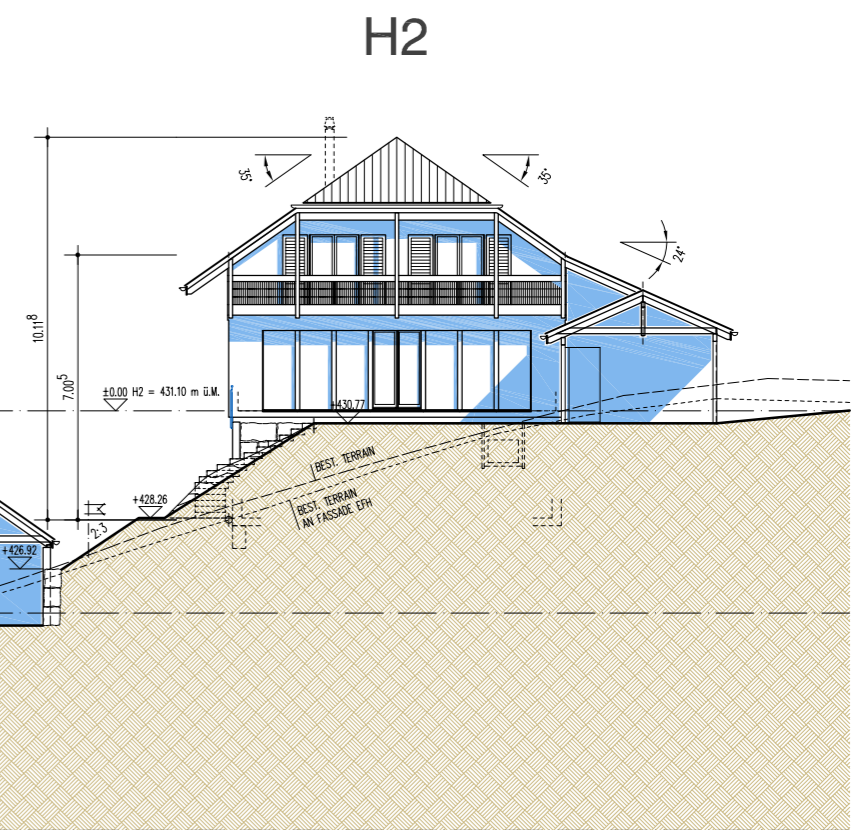
NORD-FASSADE H2



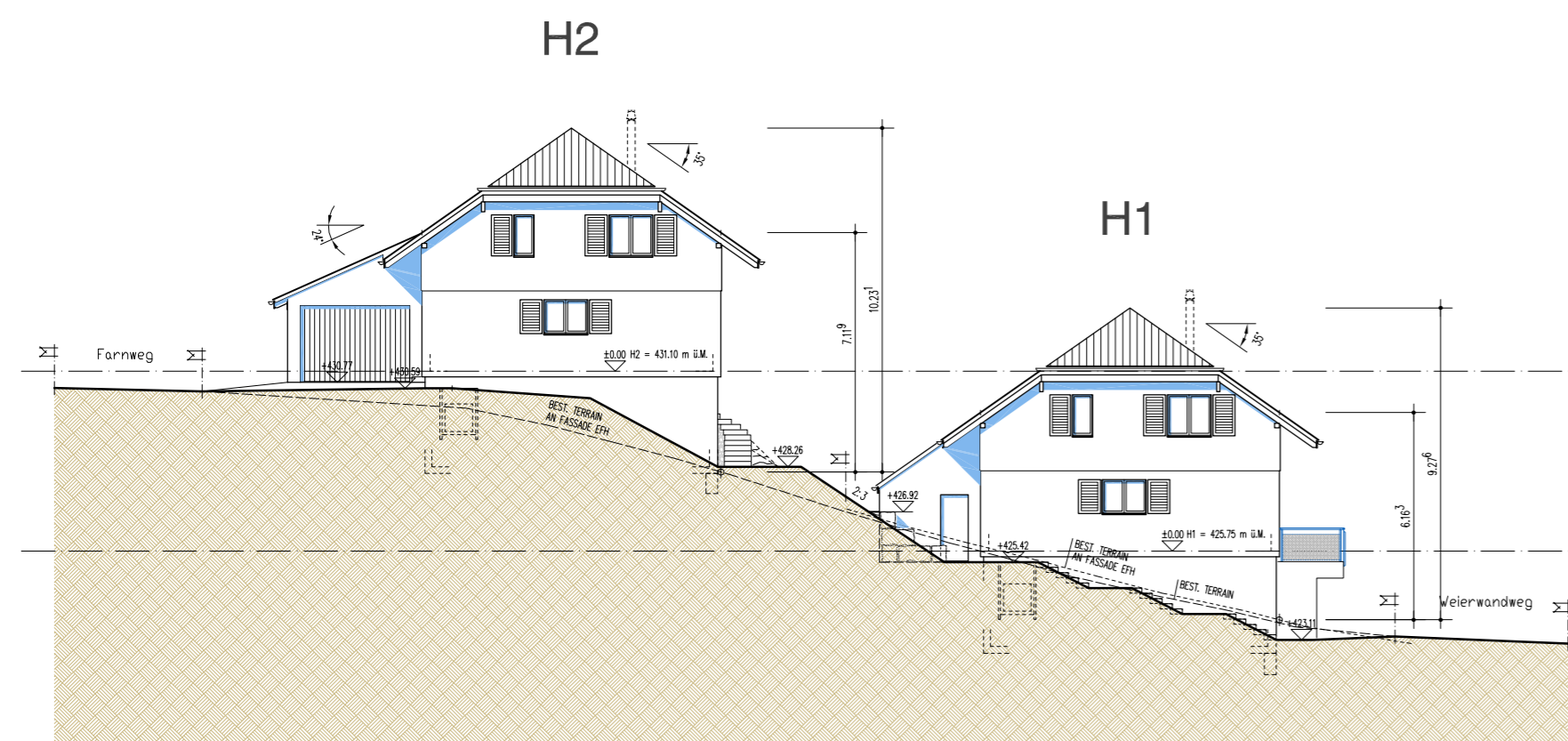
NORD-FASSADE H1



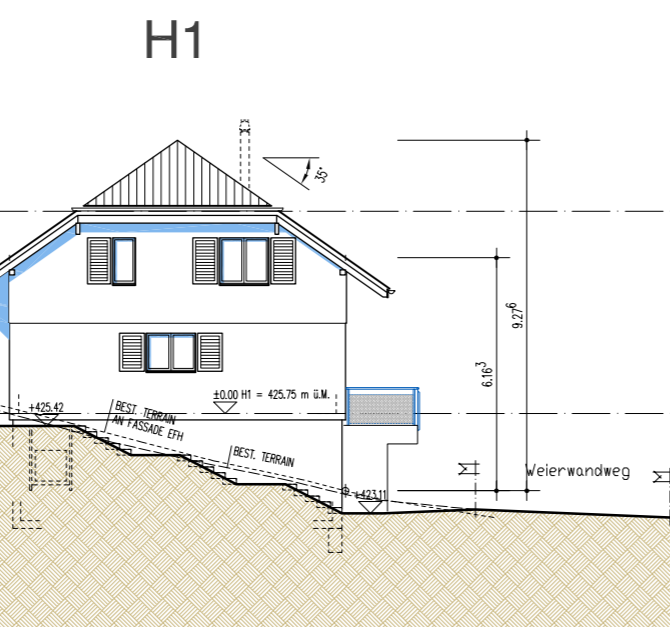
WEST-FASSADE H1



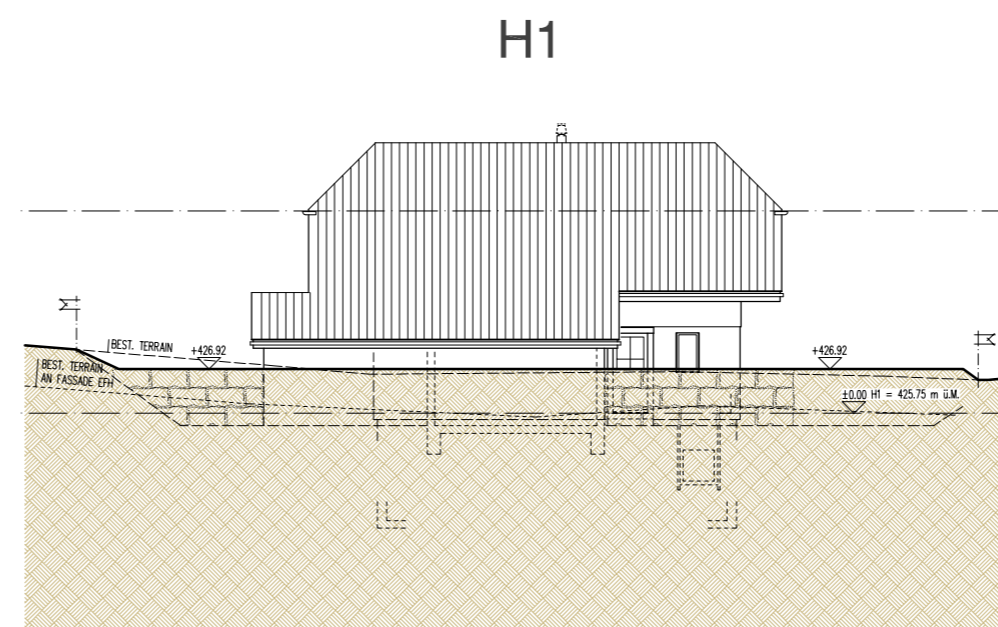
WEST-FASSADE H2



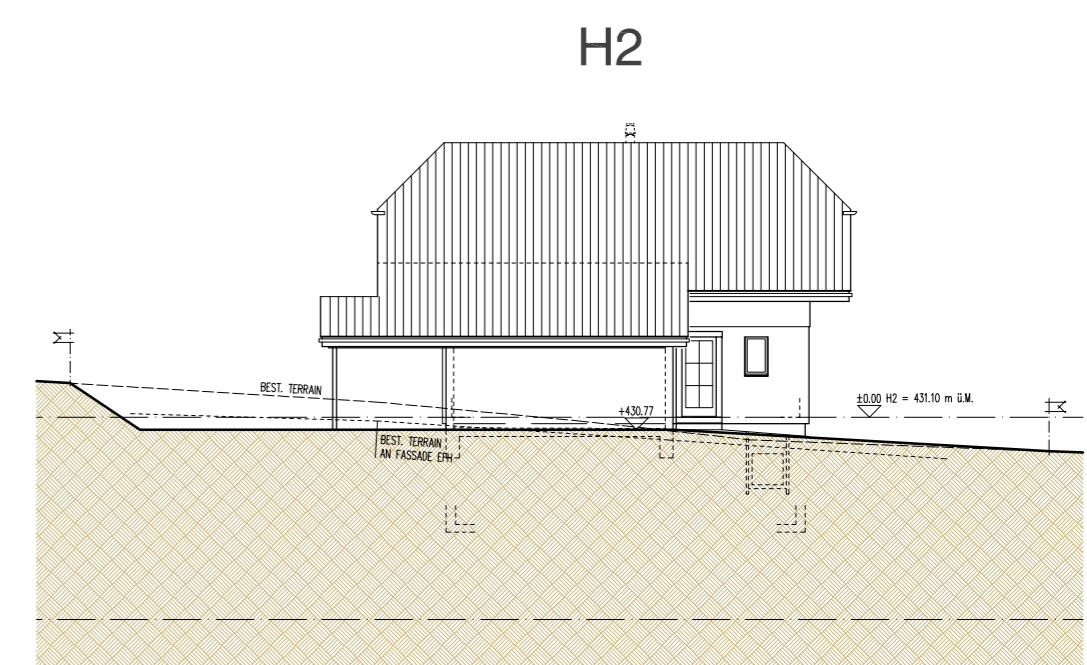
OST-FASSADE H2



OST-FASSADE H1



SÜD-FASSADE H1



SÜD-FASSADE H2

Z:\ARCH\PLANUNG\GRÄNDCHEN_FARNWEG_17.008\PROJEKT\PROJEKT-100_EFH_NEU.DWG

2 EFH PARZ. 1272 FARNWEG 5722 GRÄNDCHEN	17.008 / 04 P
PROJEKT	Gez. LSCH 14. MAI 2020
FASSADEN	Rev. 19. MAI 2020
	Rev.
	Rev.
	Rev.
Plan Gr.	52.5 / 29.7
Aktiengesellschaft Kämpf Planung und Holzbau	Suhrhardweg 6 5102 Ruppertswil Tel. 062 889 16 00 Fax. 062 889 16 01

